

- SERIE MRDB -
Riduttori Vite senza Fine
Worm Gearboxes

ELLE.GI SRL

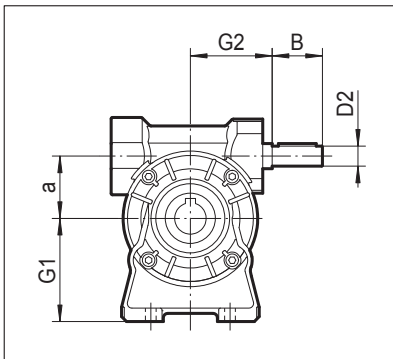
*Organi di
Trasmissione*



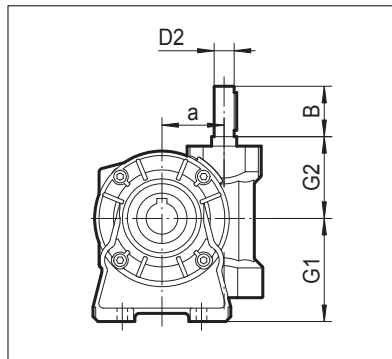
12.4.3 MRDB.. HS.. Dimensioni / Outline dimension

MRDB..HS..

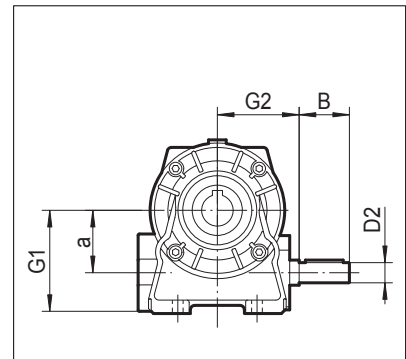
MRDB_A..HS.



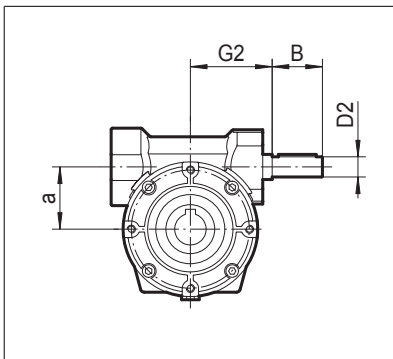
MRDB_V..HS.



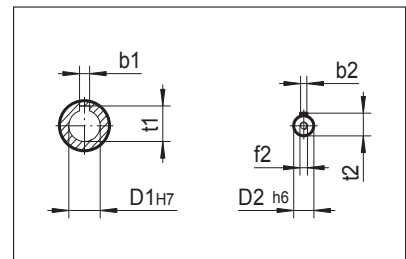
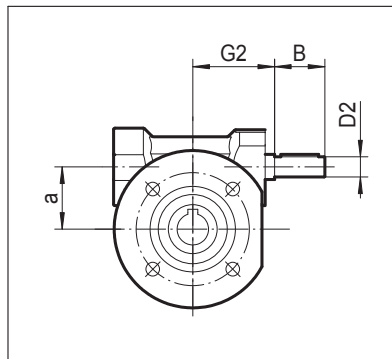
MRDB_N..HS.



MRDB_P..HS.



**MRDB_F..HS.
MRDB_FA..HS.**

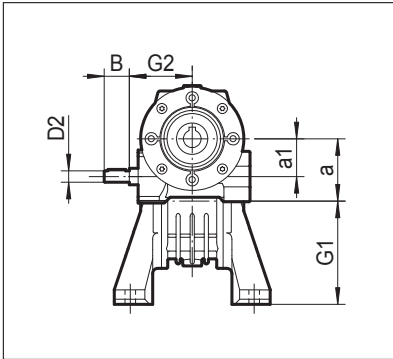


	a	D1 _{H7}	t1	b1	D2 _{h6}	t2	b2	B	G2	G1	f2
MRDB 30__HS	30	14	16.3	5	9	10.2	3	20	50	47	—
MRDB 44__HS	44.6	18	20.8	6	11	12.5	4	30	54	55	—
MRDB 49__HS	49.5	25	28.3	8	16	18	5	40	65	64.5	M6x16

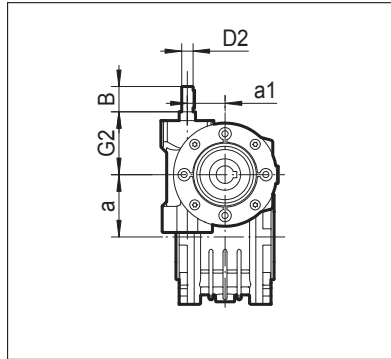
12.4.4 **MRDB/MRDB.. HS..** Dimensioni / *Outline dimension*

MRDB/MRDB ..HS..

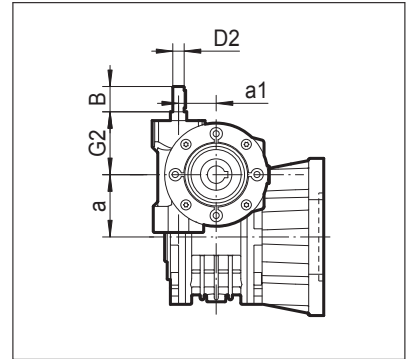
MRDB/MRDB_A..HS.



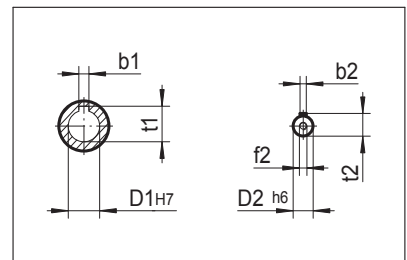
MRDB/MRDB_P..HS.



MRDB/MRDB_F..HS.



	a	a1	D1 _{H7}	t1	b1	D2 _{h6}
MRDB/MRDB 30/44_HS	44.6	30	18	20.8	6	9
MRDB/MRDV 30/49_HS	49.5	30	25	28.3	8	9
	t2	b2	B	G2	G1	f2
MRDB/MRDB 30/44_HS	10.2	3	20	50	72	—
MRDB/MRDB 30/49_HS	10.2	3	20	50	82	—



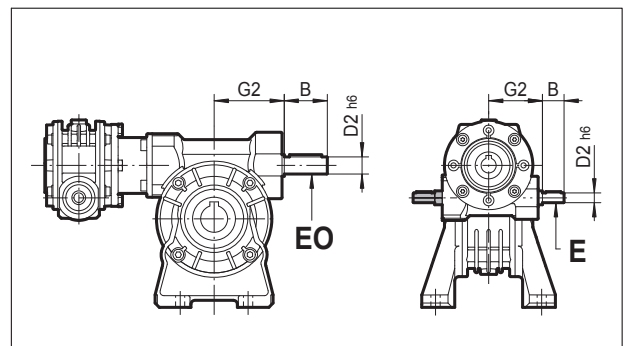
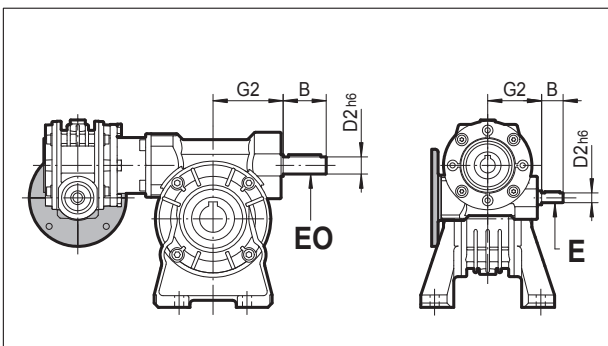
12.4.5 **MRDB/MRDB.. E(EO)..** Dimensioni / *Outline dimension*

I riduttori possono essere forniti su ordinazione con albero doppio in uscita

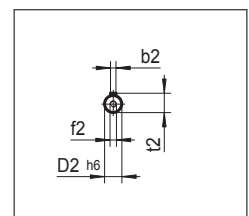
Worm gears can be optionally requested with extended wormshaft at NDE by specifying the option E or EO (for double worm combined units) at the time of order.

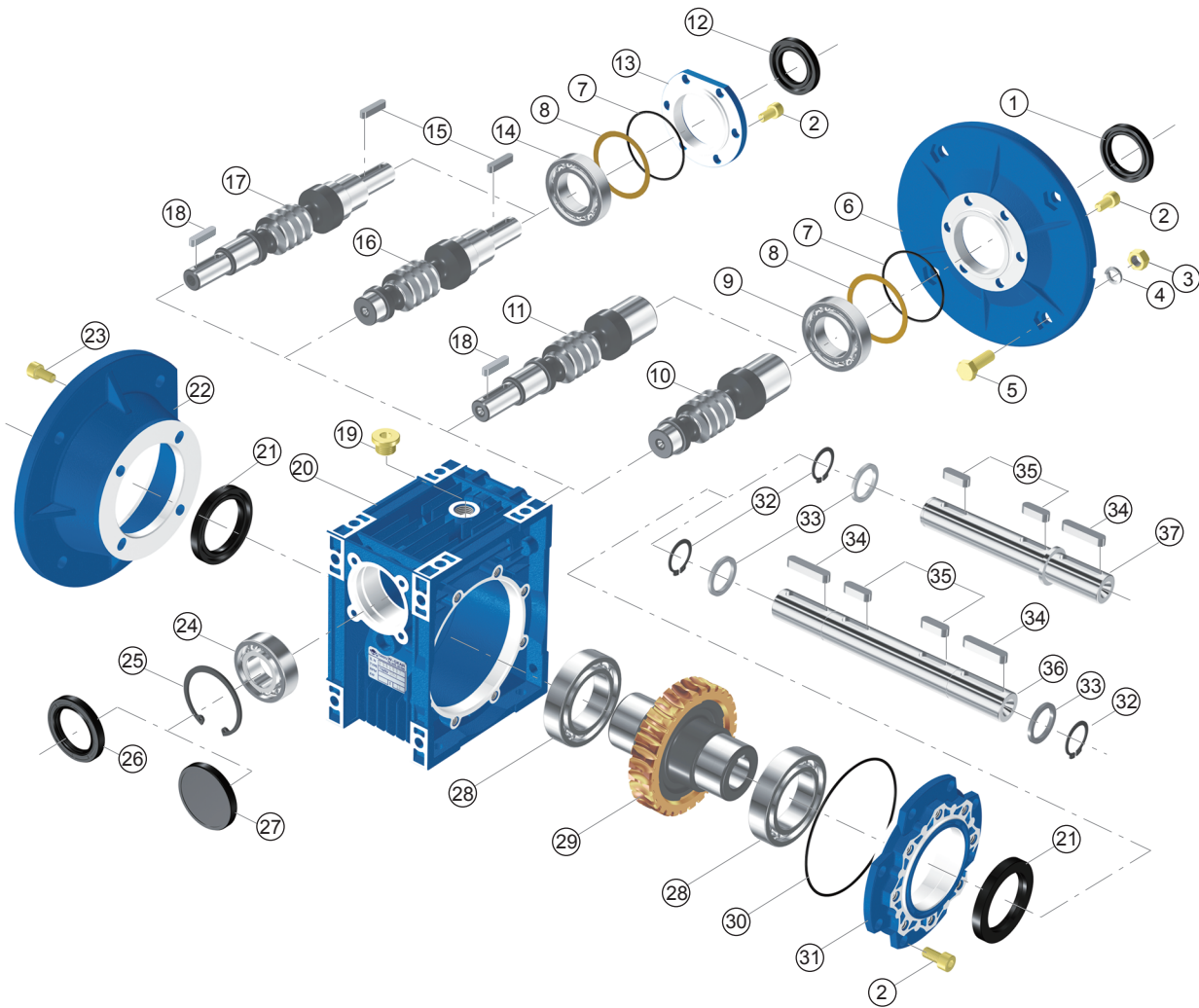
P(IEC)

HS



	D2 _{h6}	t2	b2	B	G2	f2
MRDB 30	9	10.2	3	20	50	-
MRDB 44	11	12.5	4	30	56	-
MRDB 49	16	18	5	40	65	M6





- | | | | |
|------------------------------------|-------------------------------|---------------------------------------|-------------------------|
| 1. Anello | 19. Tappo | 1. Oil seal | 19. Oil plug |
| 2. Vite | 20. Carcassa | 2. Inner hex screw | 20. Casing |
| 3. Dado | 21. Anello | 3. Nut | 21. Oil seal |
| 4. Rondella | 22. Flangia in uscita | 4. Spring washer | 22. Output flange |
| 5. Vite | 23. Vite | 5. Hex screw | 23. Inner hex screw |
| 6. Flangia in ingresso | 24. Cuscinetto | 6. Input flange | 24. Bearing |
| 7. O-Ring | 25. Seeger | 7. O-ring | 25. Hole-circlip |
| 8. Spessore | 26. Anello | 8. Adjust spacer | 26. Oil seal |
| 9. Cuscinetto | 27. Coperchio | 9. Bearing | 27. Cover |
| 10. Vite in ingresso | 28. Cuscinetto | 10. Hole input worm | 28. Bearing |
| 11. Vite in ingresso bisporgente | 29. Corona | 11. Hole input and shaft output worm | 29. Worm wheel |
| 12. Anello | 30. O-Ring | 12. Oil seal | 30. O-ring |
| 13. Coperchio | 31. Coperchio in uscita | 13. Input cover | 31. Output cover |
| 14. Cuscinetto | 32. Seeger | 14. Bearing | 32. Shaft-circlip |
| 15. Chiavetta | 33. Spessore | 15. Key | 33. Spacer |
| 16. Vite senza fine albero maschio | 34. Chiavetta | 16. Shaft input worm | 34. Key |
| 17. Vite senza fine doppia | 35. Chiavetta | 17. Shaft input and shaft output worm | 35. Key |
| 18. Chiavetta | 36. Albero in uscita doppio | 18. Key | 36. Double output shaft |
| | 37. Albero in uscita semplice | | 37. Single output shaft |