

Elle.Gi



ALUMINIUM HOUSING

MC MY SERIES

SINGLE-PHASE ASYNCHRONOUS MOTORS - Motori Elettrici Asincroni Monofase

OPERATING CONDITIONS - Condizioni di operatività

- Ambient temperature / Temperatura Ambiente: $-15^{\circ}\text{C} \leq \theta \leq 40^{\circ}\text{C}$
- Rated voltage / Tensione nominale: $\pm 5\%$
- Voltage / Voltaggio :220V/50Hz
- Duty / Servizio :continuous(S)

- Protection Class / Classe di protezione:IP44/IP54/IP55
- Insulation Class / Classe d'isolamento:B/F
- Cooling method / Metodo di raffreddamento: ICO141



MY SINGLE PHASE ASYNCHRONOUS MOTORS - MOTORI ELETTRICI ASINCRONI MONOFASE

MY Series Aluminium housing single-phase capacitor-run asynchronous motors, with latest design in entirety, It's made of superior materials and meet the relative rules of IEC standard. MY motors have good performance, safe and reliable operation, nice appearance, it can be maintained very conveniently, while with low noise, little appearance, it can be maintained very conveniently, while with low noise, little vibration, light weight and simple construction. This series motors can be used on household appliance, pumps, fan and recording meters, etc.

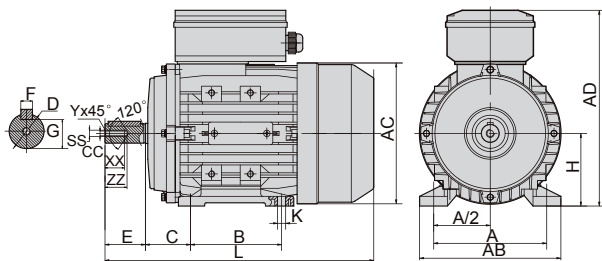
La serie dei motori monofase My con condensatore è prodotta con ottimo materiale e secondo le caratteristiche standard. E' conveniente e con basso rumore, piccole vibrazioni pesi leggeri e costruzione semplice. Questa serie di motori puo' essere utilizzata per applicazioni per uso domestico, su pompe, ventilatori ecc...

TECHNICAL DATA AT 220V 50Hz

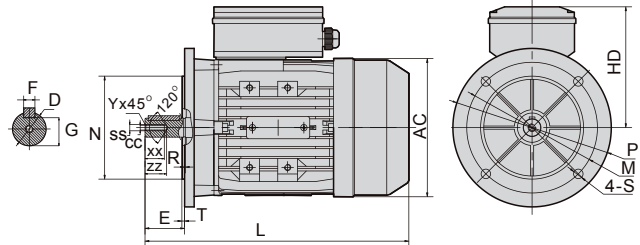
	TYPE	Power KW	Current (A)	Speed (r/min)	Eff (%)	Power Factor	Tstart/Tn	Tmax/Tn	Starting current (A)	Run Capacitor (uf/v)
2 POLES - 2 POLI	MY561-2	0.09	0.79	2760	54	0.92	0.65	1.6	3	4uf/450V
	MY562-2	0.12	0.98	2770	58	0.92	0.65	1.6	4	6uf/450V
	MY563-2	0.18	1.42	2780	60	0.92	0.65	1.6	5	10uf/450V
	MY631-2	0.18	1.33	2780	62	0.95	0.6	1.7	5	12uf/450V
	MY632-2	0.25	1.84	2780	65	0.95	0.6	1.7	7	14uf/450V
	MY633-2	0.37	2.53	2780	67	0.93	0.45	1.65	8	16uf/450V
	MY711-2	0.37	2.53	2800	67	0.95	0.6	1.7	10	16uf/450V
	MY712-2	0.55	3.49	2810	70	0.98	0.55	1.7	15	20uf/450V
	MY713-2	0.75	4.5	2810	74	0.97	0.48	1.8	20	25uf/450V
	MY801-2	0.75	4.62	2810	72	0.98	0.35	1.7	20	25uf/450V
	MY802-2	1.1	6.51	2820	75	0.98	0.33	1.7	28	35uf/450V
	MY803-2	1.5	8.5	2810	77	0.98	0.33	1.8	40	40uf/450V
	MY90S-2	1.5	8.76	2820	76	0.98	0.3	1.8	40	45uf/450V
	MY90L-2	2.2	12.7	2820	77	0.98	0.3	1.8	60	60uf/450V
MY100L-2	3	17.1	2840	78	0.98	0.28	1.8	75	60uf/450V	
4 POLES - 4 POLI	MY561-4	0.06	0.59	1360	48	0.92	0.75	1.6	2.5	4uf/450V
	MY562-4	0.09	0.83	1370	51	0.92	0.75	1.6	3	6uf/450V
	MY631-4	0.12	1.03	1380	55	0.92	0.65	1.6	3.5	10uf/450V
	MY632-4	0.18	1.49	1390	57	0.92	0.65	1.5	5.5	10uf/450V
	MY633-4	0.25	2.00	1370	58	0.95	0.6	1.6	5	14uf/450V
	MY711-4	0.25	1.90	1400	61	0.94	0.5	1.5	8	12uf/450V
	MY712-4	0.37	2.76	1400	62	0.94	0.5	1.5	10	16uf/450V
	MY713-4	0.55	3.70	1400	64	0.97	0.48	1.7	12	20uf/450V
	MY801-4	0.55	3.93	1400	64	0.95	0.35	1.7	15	20uf/450V
	MY802-4	0.75	5.05	1410	68	0.95	0.33	1.7	20	25uf/450V
	MY90S-4	1.1	6.87	1410	71	0.98	0.33	1.8	30	40uf/450V
	MY90L-4	1.5	9.12	1420	73	0.98	0.3	1.8	40	45uf/450V
	MY100L1-4	2.2	12.8	1440	76	0.98	0.28	1.8	60	70uf/450V
	MY100L2-4	3	17.1	1440	78	0.98	0.28	1.8	75	70uf/450V

Single phase: MY is 230V/50Hz, 240V/50Hz, 110V/60Hz, 115V/60Hz, 127V/60Hz, Models are available on request.

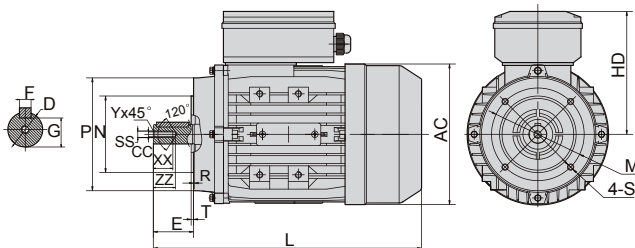
IMB3



IMB5



IMB14





MY SINGLE PHASE ASYNCHRONOUS MOTORS - MOTORI ELETTRICI ASINCRONI MONOFASE

MY SERIES OVERALL & INSTALLATION DIMENSION

Frame Size	Installation Size																		Overall Dimension					Shaft end screw dimensions							
	IMB3									IMB14						IMB5															
	A	B	C	D	E	F	G	H	K	M	N	P	R	S	T	M	N	P	R	S	T	AB	AC	AD	HD	L	SS	XX	ZZ	CC	Y
56	90	71	36	9	20	3	7.2	56	5.8X5.8	65	50	80	0	M5	2.5	98	80	120	0	7	3.0	108	φ115	256	100	192	M3	8	12	2.5	0.5
63	100	80	40	11	23	4	8.5	63	7X10	75	60	90	0	M5	2.5	115	95	140	0	10	3.0	120	φ130	179	116	230	M4	10	15	3.3	0.8
71	112	90	45	14	30	5	11	71	7X10	85	70	105	0	M6	2.5	130	110	160	0	10	3.5	135	φ145	194	123	260	M5	12	18	4.2	0.8
80	125	100	50	19	40	6	15.5	80	10X13	100	80	120	0	M6	3.0	165	130	200	0	12	3.5	160	φ165	223	143	295	M6	16	22	5	1
90S	140	100	56	24	50	8	20	90	10X13	115	95	140	0	M8	3.0	165	130	200	0	12	3.5	175	φ185	240	150	335	M8	20	25	6.8	1
90L	140	125	56	24	50	8	20	90	10X13	115	95	140	0	M8	3.0	165	130	200	0	12	3.5	175	φ185	240	150	365	M8	20	25	6.8	1
100L	160	140	63	28	60	8	24	100	12X15	130	110	160	0	M8	3.5	215	180	250	0	15	4.0	196	φ205	260	160	400	M10	22	28	8.5	1.5