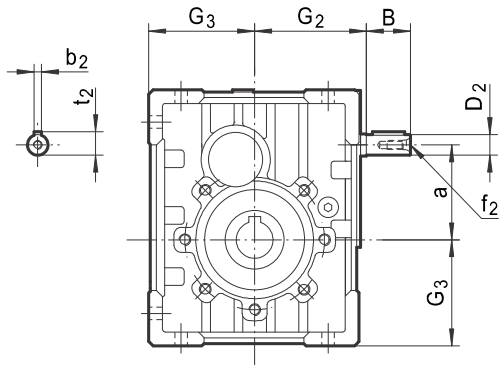
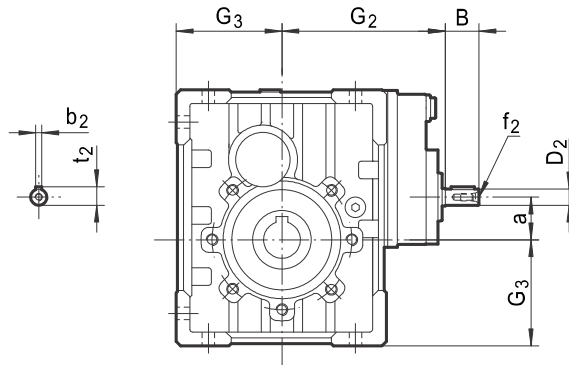


7.3 DKM..HS Dimensioni / Outline Dimension

DKM..B..HS



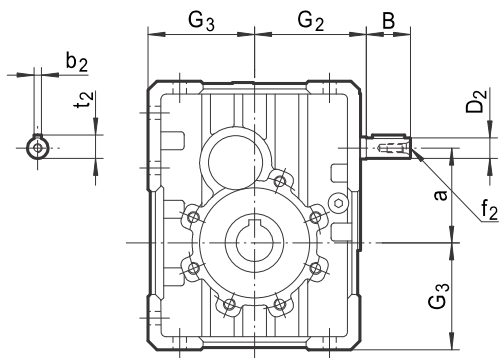
DKM..C..HS



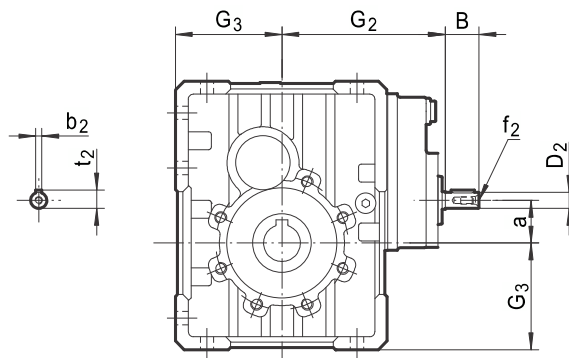
	B	D _{2 j6}	G ₂	G ₃	a	b ₂	f ₂	t ₂
DKM28B	23	11	65	60	57	4	-	12.5
DKM28C	23	11	100	60	21.5	4	-	12.5
DKM38B	30	14	76	72	64.5	5	M6	16
DKM38C	23	11	111	72	29	4	-	12.5
DKM48B	40	16	91	86	74.5	5	M6	18
DKM48C	30	14	132	86	30.5	5	M6	16
DKM58B	40	19	107	103	88	6	M6	21.5
DKM58C	30	14	148	103	44	5	M6	16
DKM68B	50	24	132	127.5	108	8	M8	27
DKM68C	40	19	181	127.5	52	6	M6	21.5

7.4 DKB..HS Dimensioni / Outline Dimension

DKB..B..HS



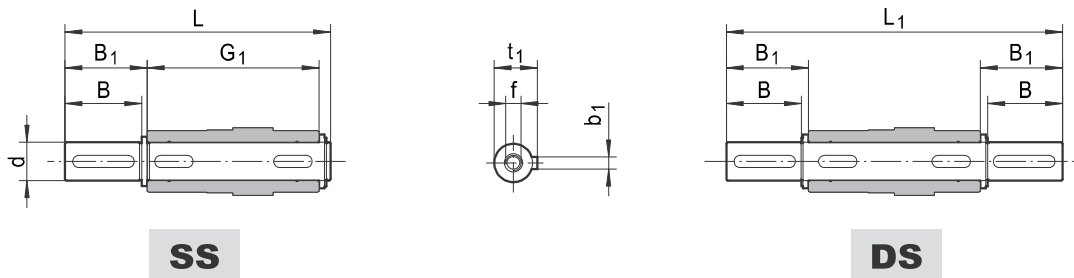
DKB..C..HS



	B	D _{2 j6}	G ₂	G ₃	a	b ₂	f ₂	t ₂
DKB38B	30	14	76	72.5	64.5	5	M6	16
DKB38C	23	11	111	72.5	29	4	-	12.5
DKB48B	40	16	91	87	74.5	5	M6	18
DKB48C	30	14	132	87	30.5	5	M6	16
DKB58B	40	19	107	100	88	6	M6	21.5
DKB58C	30	14	148	100	44	5	M6	16
DKB68B	50	24	132	125	108	8	M8	27
DKB68C	40	19	181	125	52	6	M6	21.5

8. DIMENSIONI ACCESSORI / ACCESSORIES OUTLINE DIMENSION SHEET

8.1 Albero in uscita / Output Shafts

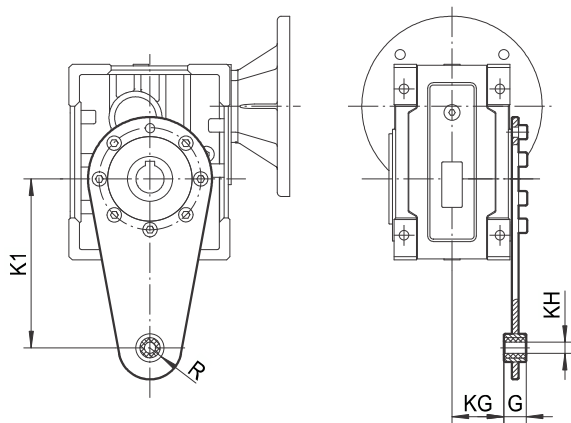


	d h6	B	B ₁	G ₁	L	L ₁	f	b ₁	t ₁
DKM28	25	50	53.5	92	153	199	M10x22	8	28
DKM38	25	50	53.5	112	173	219	M10x22	8	28
DKM48	28	60	63.5	120	192	247	M10x22	8	31
DKM58	35	80	84.5	140	234	309	M12x28	10	38
DKM68	42	80	84.5	155	249	324	M16x36	12	45
DKB38	25	60	65	120	192	246.4	M8x19	8	28
DKB48_d 28	28	60	65	127	199	255	M8x20	8	31
DKB48_d 30	30	60	65	127	199	255	M10x22	8	33
DKB58	35	60	65	140	214	268	M12x22	10	38
DKB68	42	75	80	155	244	313.5	M12x28	12	45

* Solo su richiesta
* Only on request

8.2 Braccio di reazione / Torque Arm

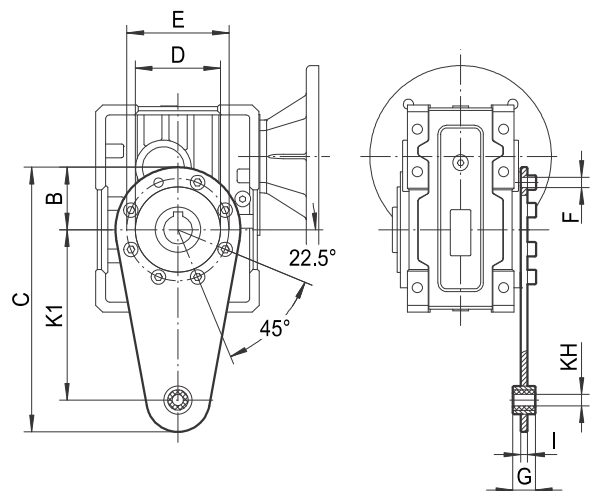
8.2.1 DKM.. Braccio di reazione / Torque Arm



	K1	G	KG	KH	R
DKM28	100	14	38.5	10	18
DKM38	150	14	49	10	18
DKM48	200	25	47.5	20	30
DKM58	200	25	57.5	20	30
DKM68	250	30	62	25	35

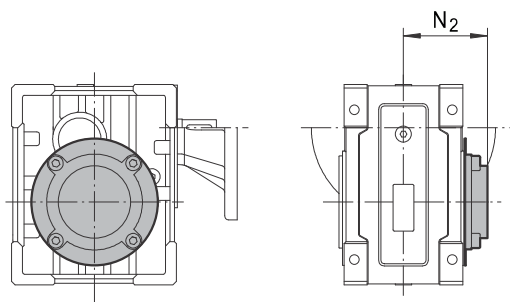
8.2.2 DKB.. Braccio di reazione / Torque Arm

	K1	B	C	D	E	F	G	KH	I
DKB38	150	55	233	75	90	9	20	10	6
DKB48	200	60	300	90	110	9	25	20	6
DKB58	200	80	318	110	130	11	25	20	6
DKB68	250	100	388	130	165	13	25	20	6



8.3 Coprimozzo / Cover

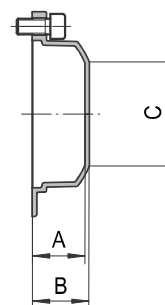
8.3.1 DKM.. Coprimozzo / Cover



	N ₂
DKM28	63
DKM38	73
DKM48	79
DKM58	94
DKM68	102

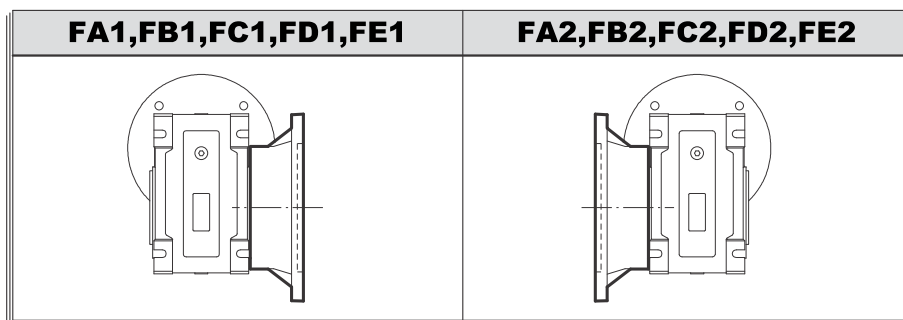
8.3.2 DKB.. Coprimozzo / Cover

	A	B	C
DKB38	26.5	29	Φ35
DKB48	24.5	27	Φ54
DKB58	26.5	29	Φ71
DKB68	27.5	30	Φ89



9. POSIZIONI DI MONTAGGIO / INSTALLATION POSITIONS DIAGRAM

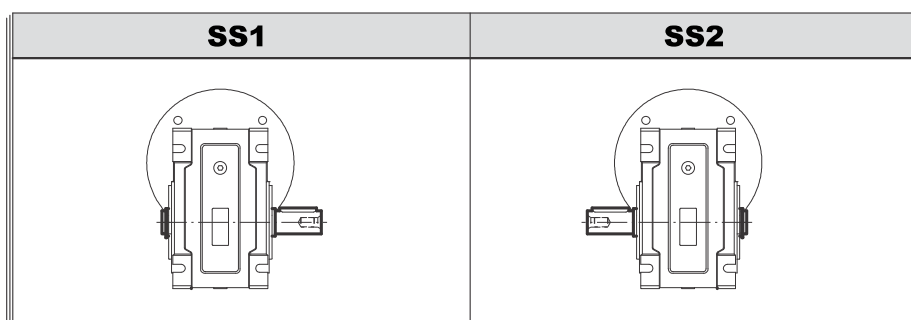
9.1 Posizioni di montaggio flangia uscita / Position diagram for output flange






Senza indicazione specifica, il riduttore verrà fornito con la flangia in uscita posizione F1 riferimento posizione B3.

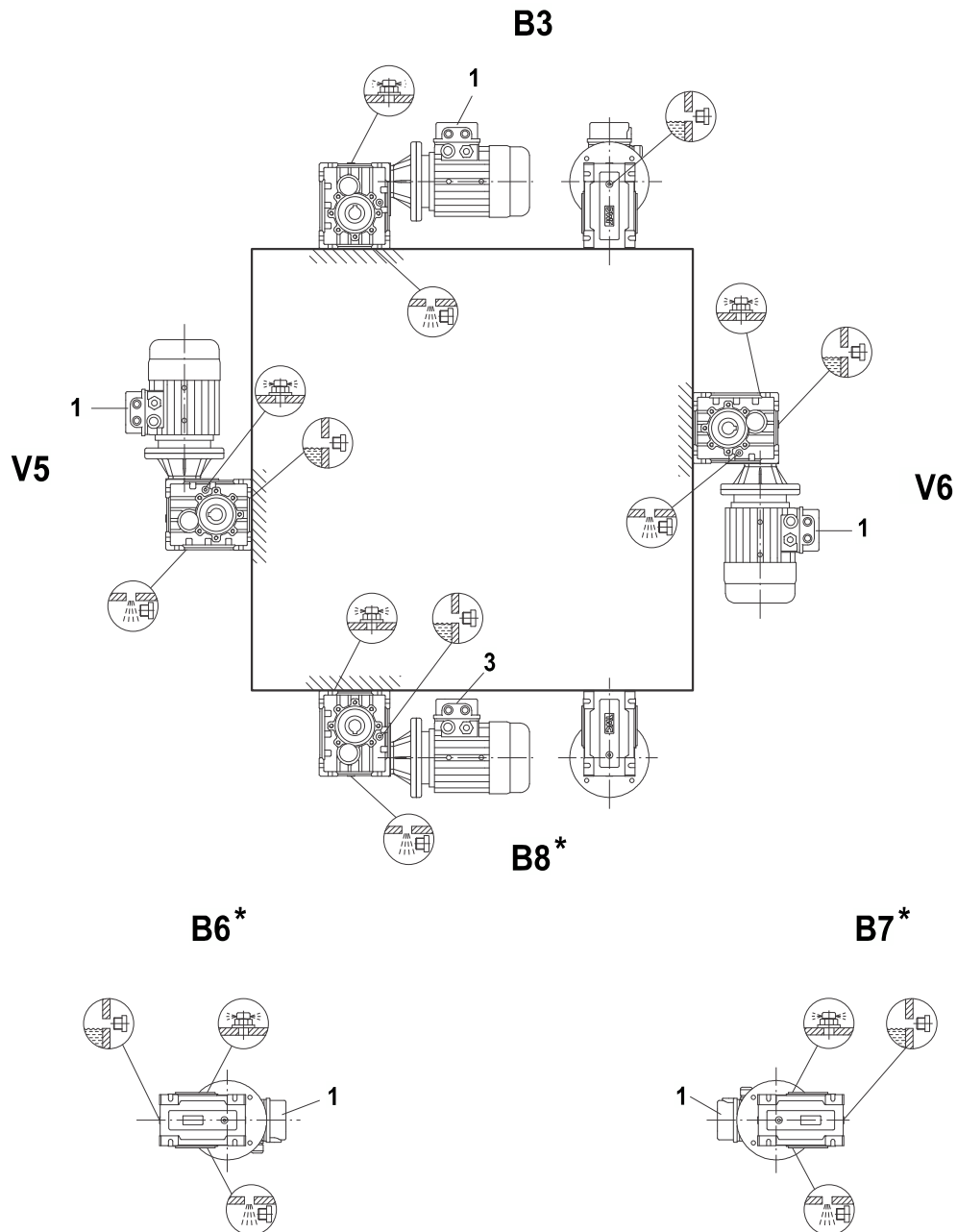
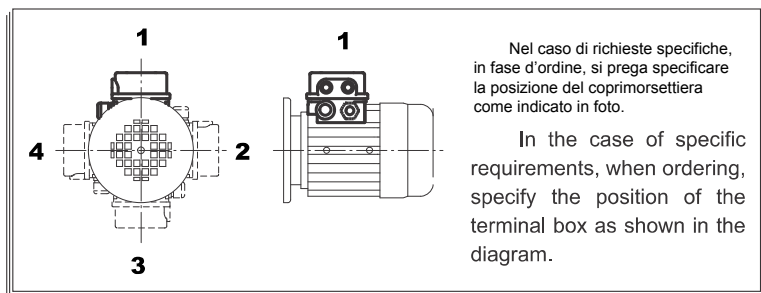
Unless specified otherwise, the gear units is supplied with the flange in pos. F.1 referred to position B3.

9.2 Posizioni albero in uscita / Position diagram for single output shaft



9.3 DKM.. / OR DKB.. Posizioni di montaggio / *Mounting Positions*

Symbol	Meaning
	Breather valve
	Oil level plug
	Oil drain plug



*: Significalca che il lubrificante non può essere aggiunto come indicato dal livello dell'olio, ma può essere inserito olio come indicato in tabella.

*: It means the lubricant can't be added according to the oil level line plug, but also higher the plug the fill quantity sa shown in the table