

- SERIE MRDV -

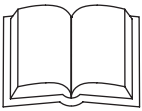
Riduttori a Vite Senza Fine -

MRDV Series Worm-Gear Speed Reducers



ELLE.GI SRL

Organi di Trasmissione



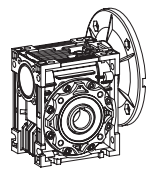
| MRDV-MRDV / RDV-MRDV | | | |
|----------------------|-----|-----|-----|
| AS1 | AS2 | VS1 | VS2 |
| | | | |
| PS1 | PS2 | BS1 | BS2 |
| | | | |


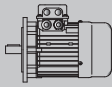

Nel caso non venga specificata la posizione di montaggio, viene considerata standard quella in BS2.

The position of the 1st reducer with respect to the 2nd gear reducer depends on the versions. Unless specified at the time of order, combination groups will be supplied in version BS2. The specified mounting position refers to the 2nd gear reducer, see page 17 for the possible mounting positions.

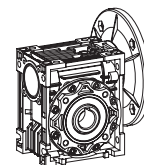
| UDL-MRDV | | | |
|-------------|----|----|----|
| MRDV...U-B3 | B6 | V5 | V6 |
| | | | |
| | | | |
| B8 | B7 | | |
| | | | |


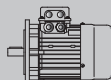
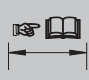
PRESTAZIONI - PERFORMANCE PARAMETER

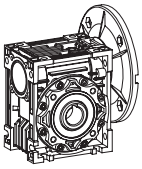


| P_1 [kW] | n_2 [min ⁻¹] | M_2 [Nm] | i | Fr_2 [N] | fs |  |  |  | | | |
|---------------|-------------------------------|---------------|------|---------------|------|---|---|---|--------------------|-------------|----|
| 0.06 | 0.58 | 261 | 2400 | 3490 | 0.2 | MRDV030+040 | 5614 | 72 | | | |
| | 0.4 | 300 | 3200 | 3490 | 0.2 | | | | | | |
| | 0.4 | 279 | 4000 | 3490 | 0.1 | | | | | | |
| | 0.28 | 338 | 5000 | 3490 | 0.1 | | | | | | |
| | 1.6 | 141 | 900 | 4840 | 1 | | | | MRDV030+050 | 5614 | 72 |
| | 1.2 | 169 | 1200 | 4840 | 0.7 | | | | | | |
| | 0.93 | 199 | 1500 | 4840 | 0.7 | | | | | | |
| | 0.78 | 222 | 1800 | 4840 | 0.7 | | | | | | |
| | 0.6 | 266 | 2400 | 4840 | 0.5 | | | | | | |
| | 0.5 | 307 | 3000 | 4840 | 0.4 | | | | | | |
| | 0.35 | 288 | 4000 | 4840 | 0.3 | | | | | | |
| | 0.29 | 311 | 4800 | 4840 | 0.3 | | | | | | |
| | 0.9 | 204 | 1500 | 6270 | 1.1 | MRDV030+063 | 5614 | 72 | | | |
| | 0.78 | 225 | 1800 | 6270 | 0.9 | | | | | | |
| | 0.58 | 276 | 2400 | 6270 | 0.8 | | | | | | |
| | 0.47 | 319 | 3000 | 6270 | 0.7 | | | | | | |
| | 0.35 | 306 | 4000 | 6270 | 0.6 | | | | | | |
| | 0.28 | 360 | 5000 | 6270 | 0.4 | | | | | | |
| | 0.6 | 330 | 2400 | 7380 | 1.1 | MRDV040+075 | 5614 | 73 | | | |
| | 0.47 | 377 | 3000 | 7380 | 0.8 | | | | | | |
| | 0.35 | 355 | 4000 | 7380 | 0.7 | | | | | | |
| | 0.28 | 419 | 5000 | 7380 | 0.5 | | | | | | |
| | 0.5 | 406 | 3000 | 8180 | 1.4 | MRDV040+090 | 5614 | 73 | | | |
| | 0.35 | 365 | 4000 | 8180 | 1.3 | | | | | | |
| | 0.28 | 431 | 5000 | 8180 | 1 | | | | | | |
| | 0.09 | 373.3 | 2 | 7.5 | 399 | 3.9 | MRDV025 | 5612 | 58 | | |
| | | 280 | 2.6 | 10 | 439 | 3.4 | | | | | |
| | | 186.7 | 3.8 | 15 | 503 | 2.4 | | | | | |
| 140 | | 4.9 | 20 | 553 | 1.9 | | | | | | |
| 93.3 | | 6.7 | 30 | 633 | 1.3 | | | | | | |
| 70 | | 8.3 | 40 | 697 | 1.1 | | | | | | |
| 56 | | 10 | 50 | 751 | 0.9 | | | | | | |
| 186.7 | | 3.9 | 7.5 | 503 | 2.8 | MRDV025 | | | | 5624 | 58 |
| 140 | | 5.1 | 10 | 553 | 2.4 | | | | | | |
| 93.3 | | 7.3 | 15 | 633 | 1.6 | | | | | | |
| 70 | | 9.2 | 20 | 697 | 1.3 | | | | | | |
| 46.7 | | 12 | 30 | 798 | 1.1 | | | | | | |
| 35 | | 15 | 40 | 878 | 0.9 | | | | | | |
| 373.3 | | 2 | 7.5 | 542 | 6.5 | | MRDV030 | 5612 | 59 | | |
| 280 | | 2.6 | 10 | 597 | 5 | | | | | | |
| 186.7 | | 3.7 | 15 | 683 | 3.5 | | | | | | |
| 140 | | 4.8 | 20 | 752 | 2.5 | | | | | | |


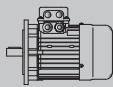

PRESTAZIONI - PERFORMANCE PARAMETER

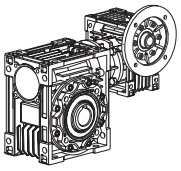


| P_1 [kW] | n_2 [min ⁻¹] | M_2 [Nm] | i | Fr_2 [N] | fs |  |  |  | |
|---------------|-------------------------------|---------------|------|---------------|------|---|---|---|----|
| 0.09 | 3.5 | 107 | 400 | 4840 | 1.2 | MRDV030+050 | 5624 | 72 | |
| | 2.8 | 123 | 500 | 4840 | 1 | | | | |
| | 2.3 | 159 | 600 | 4840 | 0.9 | | | | |
| | 1.9 | 185 | 750 | 4840 | 0.8 | | | | |
| | 1.6 | 212 | 900 | 4840 | 0.7 | | | | |
| | 1.6 | 200 | 900 | 6270 | 1 | MRDV030+063 | 5624 | 72 | |
| | 1.2 | 263 | 1200 | 6270 | 0.9 | | | | |
| | 0.93 | 305 | 1500 | 6270 | 0.7 | | | | |
| | 0.9 | 360 | 1500 | 7380 | 1.1 | MRDV040+075 | 5624 | 73 | |
| | 0.78 | 404 | 1800 | 7380 | 1 | | | | |
| | 0.58 | 496 | 2400 | 7380 | 0.7 | | | | |
| | 0.5 | 609 | 3000 | 8180 | 0.9 | MRDV040+090 | 5624 | 73 | |
| | 0.35 | 548 | 4000 | 8180 | 0.8 | | | | |
| | 0.12 | 373.3 | 2.7 | 7.5 | 399 | 3 | MRDV025 | 5622 | 58 |
| | | 280 | 3.5 | 10 | 439 | 2.6 | | | |
| 186.7 | | 5 | 15 | 503 | 1.8 | | | | |
| 140 | | 6.5 | 20 | 553 | 1.4 | | | | |
| 93.3 | | 9 | 30 | 633 | 1 | | | | |
| 70 | | 11 | 40 | 697 | 0.8 | | | | |
| 186.7 | | 5.2 | 7.5 | 683 | 3.4 | MRDV030 | 6314 | 59 | |
| 140 | | 6.7 | 10 | 752 | 2.7 | | | | |
| 93.3 | | 9.5 | 15 | 861 | 1.9 | | | | |
| 70 | | 12 | 20 | 948 | 1.5 | | | | |
| 56 | | 14 | 25 | 1021 | 1.5 | | | | |
| 46.7 | | 16 | 30 | 1085 | 1.3 | | | | |
| 35 | | 19 | 40 | 1194 | 0.9 | | | | |
| 28 | | 23 | 50 | 1286 | 0.8 | | | | |
| 46.7 | | 17 | 30 | 2087 | 2.6 | MRDV040 | 6314 | 60 | |
| 35 | | 21 | 40 | 2298 | 1.9 | | | | |
| 28 | | 25 | 50 | 2475 | 1.5 | | | | |
| 23.3 | | 28 | 60 | 2630 | 1.3 | | | | |
| 17.5 | | 34 | 80 | 2895 | 1 | | | | |
| 14 | | 38 | 100 | 3118 | 0.8 | | | | |
| 18.7 | | 42 | 75 | 2833 | 1.2 | PC063+MRDV040 | 6314 | 67 | |
| 15.6 | | 46 | 90 | 3011 | 1.2 | | | | |
| 11.7 | | 57 | 120 | 3314 | 0.9 | | | | |
| 9.3 | | 66 | 150 | 3490 | 0.7 | | | | |
| 7.8 | | 74 | 180 | 3490 | 0.6 | | | | |
| 23.3 | | 29 | 60 | 3610 | 2.3 | MRDV050 | 6314 | 61 | |
| 17.5 | | 35 | 80 | 3973 | 1.9 | | | | |
| 14 | | 40 | 100 | 4280 | 1.4 | | | | |



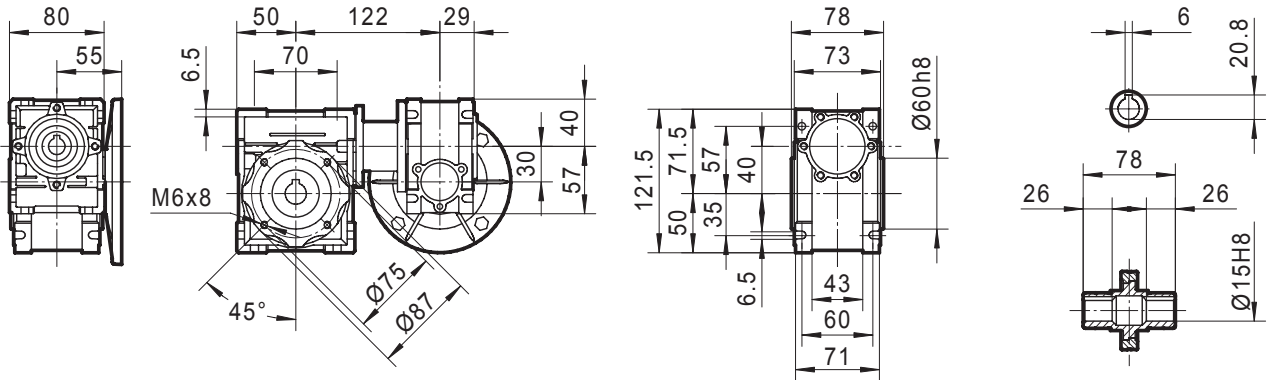
PRESTAZIONI - PERFORMANCE PARAMETER

| P_1 [kW] | n_2 [min ⁻¹] | M_2 [Nm] | i | Fr_2 [N] | fs |  |  |  |
|---------------|-------------------------------|---------------|------|---------------|------|--|---|---|
| 0.12 | 9.3 | 68 | 150 | 4840 | 1.3 | PC063+MRDV050 | 6314 | 67 |
| | 7.8 | 75 | 180 | 4840 | 1.1 | | | |
| | 5.8 | 88 | 240 | 4840 | 0.8 | | | |
| | 4.7 | 98 | 300 | 4840 | 0.7 | | | |
| | 4.7 | 119 | 300 | 4840 | 1.2 | MRDV030+050 | 6314 | 72 |
| | 3.5 | 142 | 400 | 4840 | 0.9 | | | |
| | 2.8 | 164 | 500 | 4840 | 0.7 | | | |
| | 5.8 | 92 | 240 | 6270 | 1.5 | PC063+MRDV063 | 6314 | 68 |
| | 4.7 | 103 | 300 | 6270 | 1.2 | | | |
| | 2.8 | 171 | 500 | 6270 | 1.3 | MRDV030+063 | 6314 | 72 |
| | 2.3 | 208 | 600 | 6270 | 1.1 | | | |
| | 1.9 | 241 | 750 | 6270 | 0.9 | | | |
| | 1.6 | 325 | 900 | 7380 | 1.2 | MRDV040+075 | 6314 | 73 |
| | 1.2 | 399 | 1200 | 7380 | 0.9 | | | |
| | 0.8 | 547 | 1800 | 8180 | 0.9 | MRDV040+090 | 6314 | 73 |
| | 0.58 | 695 | 2400 | 8180 | 0.9 | | | |
| | 0.5 | 884 | 3000 | 10320 | 1.2 | MRDV050+110 | 6314 | 73 |
| | 0.35 | 784 | 4000 | 10320 | 1 | | | |
| | 0.28 | 928 | 5000 | 10320 | 0.8 | | | |
| 0.18 | 373.3 | 4 | 7.5 | 542 | 3.2 | MRDV030 | 6312 | 59 |
| | 280 | 5.2 | 10 | 597 | 2.5 | | | |
| | 186.7 | 7.5 | 15 | 683 | 1.7 | | | |
| | 140 | 10 | 20 | 752 | 1.3 | | | |
| | 112 | 11 | 25 | 810 | 1.4 | | | |
| | 93.3 | 13 | 30 | 861 | 1.1 | | | |
| | 70 | 16 | 40 | 948 | 0.9 | | | |
| | 186.7 | 7.8 | 7.5 | 683 | 2.3 | MRDV030 | 6324 | 59 |
| | 140 | 10 | 10 | 752 | 1.8 | | | |
| | 93.3 | 14 | 15 | 861 | 1.3 | | | |
| | 70 | 18 | 20 | 948 | 1 | | | |
| | 56 | 21 | 25 | 1021 | 1 | MRDV030 | 6324 | 59 |
| | 46.7 | 24 | 30 | 1085 | 0.8 | | | |
| | 93.3 | 14 | 30 | 1657 | 2.4 | MRDV040 | 6312 | 60 |
| | 70 | 18 | 40 | 1824 | 1.8 | | | |
| | 56 | 21 | 50 | 1964 | 1.4 | | | |
| | 70 | 19 | 20 | 1824 | 2 | MRDV040 | 6324 | 60 |
| | 56 | 23 | 25 | 1964 | 1.7 | | | |
| | 46.7 | 26 | 30 | 2087 | 1.7 | | | |

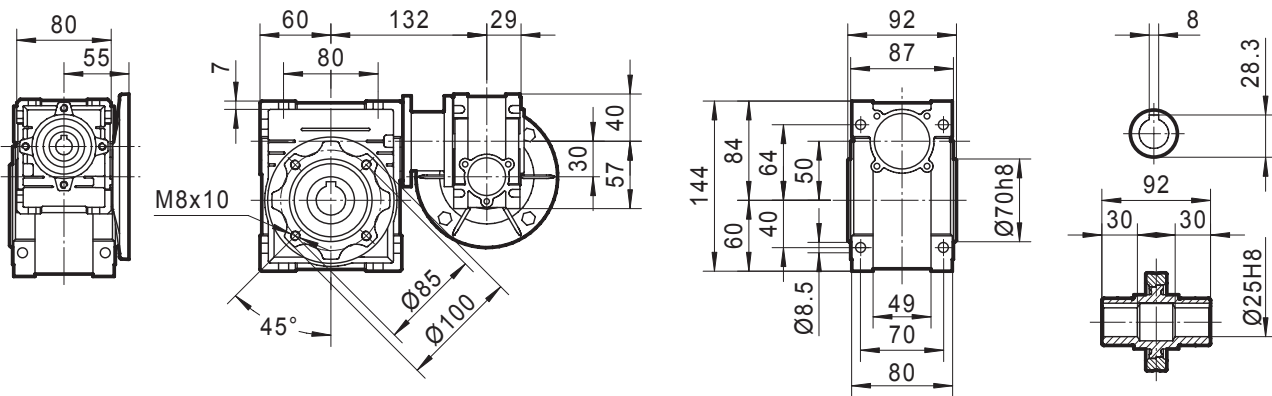


Dimensioni Combinati - MRDV SERIES DIMENSIONS

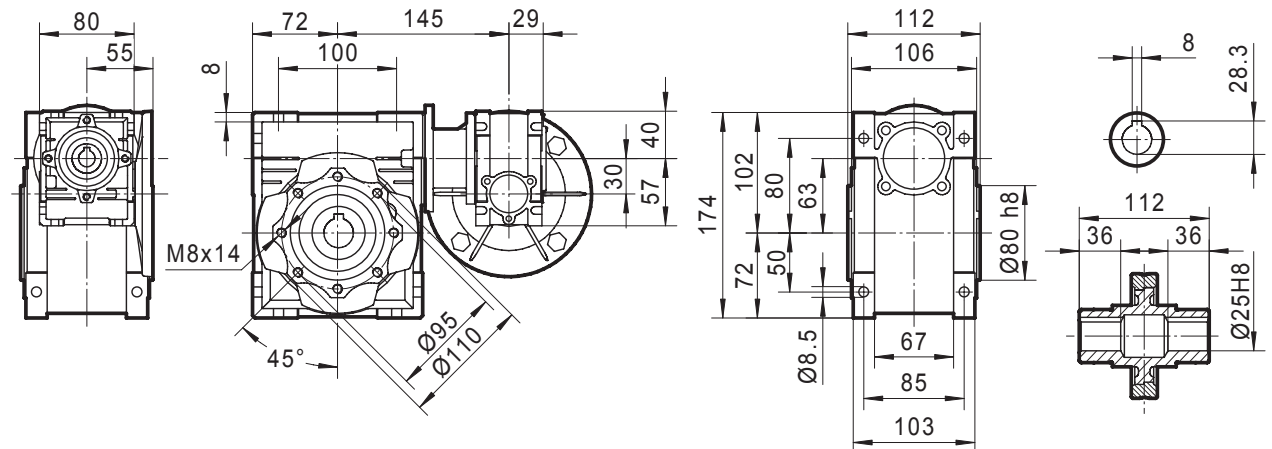
MRDV 030 + 040



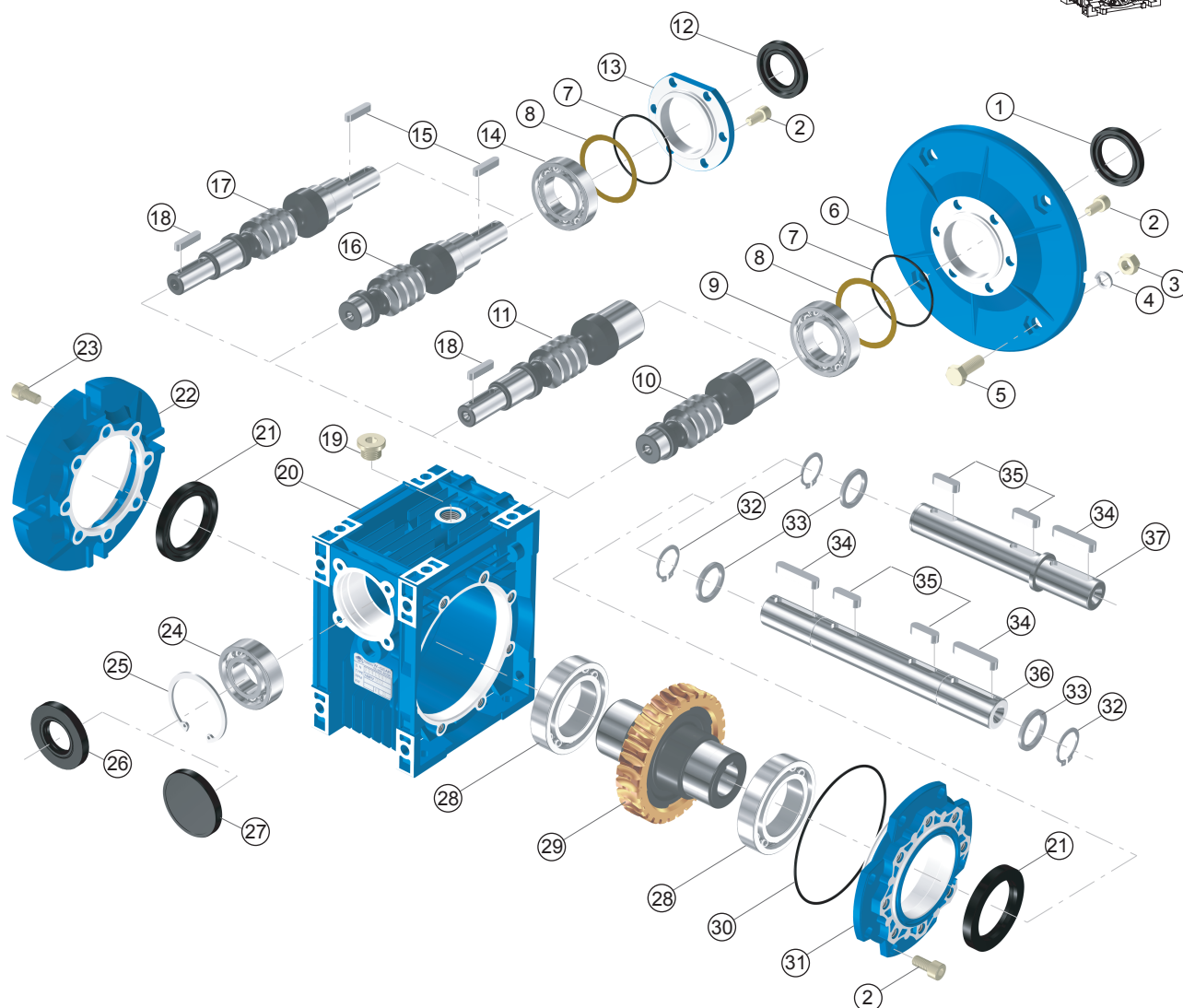
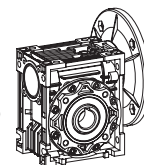
MRDV 030 + 050



MRDV 030 + 063



Esplso e parti di ricambio - EXPLODED VIEW & NAME OF PARTS



- 1. Anello di tenuta** - oil seal
- 2. Vite** - inner hex screw
- 3. Dado** - nut
- 4. Rondella** - spring washer
- 5. Bullone** - hex screw
- 6. Flangia in ingresso** - input flange
- 7. O-Ring** - O-Ring
- 8. Distanziale** - adjust spacer
- 9. Cuscinetto** - bearing
- 10. Vite forata in ingresso** - hole input worm
- 11. Vite cilindrica in ingresso e albero maschio** - hole input and shaft & output worm
- 12. Anello di tenuta** - oil seal
- 13. Coperchio in ingresso** - input cover
- 14. Cuscinetto** - Bearing
- 15. Chiavetta** - key
- 16. Albero in ingresso** - shaft input worm
- 17. Albero in ingresso e vite in uscita** - shaft input and shaft output worm
- 18. Chiavetta** - key

- 19. Tappo per olio** - oil plug
- 20. Carcassa** - casing
- 21. Anello di tenuta** - oil seal
- 22. Flangia in uscita** - output flange
- 23. Bullone** - inner hex screw
- 24. Cuscinetto** - bearing
- 25. Seeger** - hole-circlip
- 26. Anello di tenuta** - oil seal
- 27. Coperchio** - cover
- 28. Cuscinetto** - bearing
- 29. Vite** - worm wheel
- 30. O-Ring** - O-Ring
- 31. Coperchio in uscita** - output cover
- 32. Seeger albero** - shaft-circlip
- 33. Distanziale** - spacer
- 34. Chiavetta** - key
- 35. Chiavetta** - key
- 36. Albero bisporgente in uscita** - double output shaft
- 37. Albero sporgente in uscita** - single output shaft